

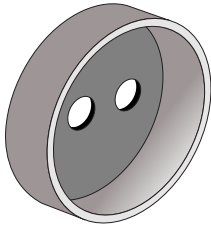
CUP SEALS

Tamper Evident Wire Cup Seals

MODEL WIRE CUP-L 1" Diameter
MODEL WIRE CUP-M 3/4" Diameter

DESCRIPTION

- 2-Piece Seal
- Bottom portion has holes to accept rope / wire / cord.
- Top portion is custom-printed and numbered to bar unauthorized replacement.



CUP



COVER

TO USE

Thread wire through closure and insert both ends into bottom cup. Twist or knot wire to secure inside.

Snap on top portion to form a tamper evident seal.



TRY THEM!

Contact ACM for free samples or with any questions about our line of Cap Seals!

OPTIONS

- ✦ Available in steel or copper
- ✦ Any hole size is available

**American Casting
& Manufacturing Corporation**



Corporate Headquarters:
51 Commercial Street
Plainview, NY 11803 USA

ISO 9001



www.SEALS.com

Toll-Free: 1-800-342-0333

Tel: (516) 349-7010 • Fax: (516) 349-8389

Email: info@seals.com



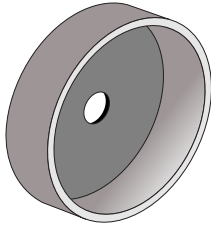
CUP SEALS

Tamper Evident Screw & Bolt Protectors

MODEL SCREW CUP-L 1" Diameter
MODEL SCREW CUP-M 3/4" Diameter

DESCRIPTION

- 2-Piece Seal
- Bottom portion has single hole.
- Hole size to match screw/bolt diameter.
- Top position is custom printed and numbered to bar unauthorized replacement.



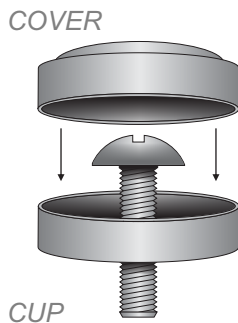
CUP



COVER

TO USE

- Insert screw/bolt through bottom portion and tighten.
- Snap on top portion to form a tamper evident seal.



Screw fastener through bottom half of cup seal



Snap on the Cup Seal front



Access is now protected!

TRY THEM!

Contact ACM for free samples or with any questions about our line of Cap Seals!

OPTIONS

- ◆ Available in steel or copper
- ◆ Any hole size is available
- ◆ Offset hole available

American Casting & Manufacturing Corporation



Corporate Headquarters:
51 Commercial Street
Plainview, NY 11803 USA

ISO 9001



www.SEALS.com

Toll-Free: 1-800-342-0333

Tel: (516) 349-7010 • Fax: (516) 349-8389

Email: info@seals.com

