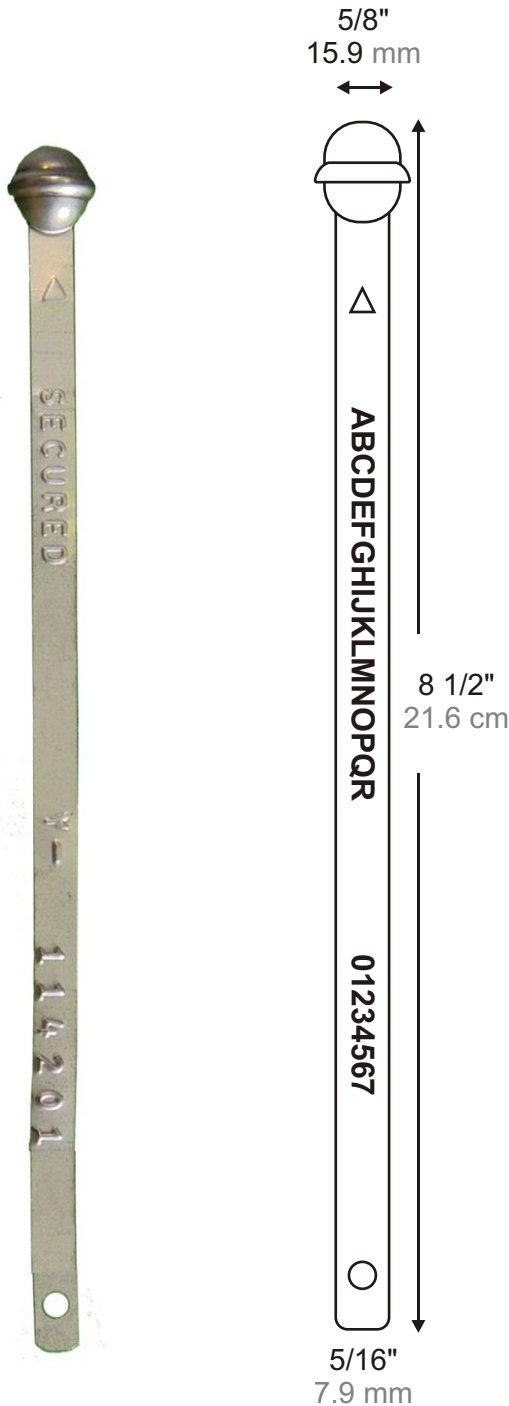


Model: G1 Steel Globe Seal

Available as...

- **STANDARD ITEM FROM STOCK:**
Pre-Printed / Pre-Numbered
- **CUSTOM ORDERED ITEM**
Printed & Numbered



DESCRIPTION:

- Made of 95# tin-plate steel.
- Dimensions: 5/16" x 8-1/2" (7.9mm x 21.6cm)
- Operational strap length: 7-1/4"
- NSN#5340-00-081-3381
- Stock printed: 'SECURED'
- Pre-numbered with 7 consecutive, sequential digits.

CUSTOM OPTIONS:

- Embossing up to 18 characters and/or 7-digit number sequence
- Company logos available
- Baked paint finish for both head and strap available
- Custom paint color available

PACKAGING:

- 100 Seals to a bundle.
- 1,000 Seals to a carton.

Cartons containing 1,000 seals measure:
18" x 18" x 17" and weigh 15 Lbs.
45.7cm x 45.7cm x 43.2cm and weigh 6.8 kg.

USE:

Self locking with no tools. Cannot be opened unless the seal is destroyed.

Insert seal's 'tab' end into locking end until you hear and feel the 'click'.

Pull-test seal to feel that it is securely seated.

*Custom Printing is available —
Contact AC&M for details.*



**American Casting
& Manufacturing Corporation**

Toll-Free (800)342-0333

Tel: (516) 349-7010 • Fax (516) 349-8389

www.SEALS.com

email: info@SEALS.com

51 Commercial St · Plainview, NY 11803 USA