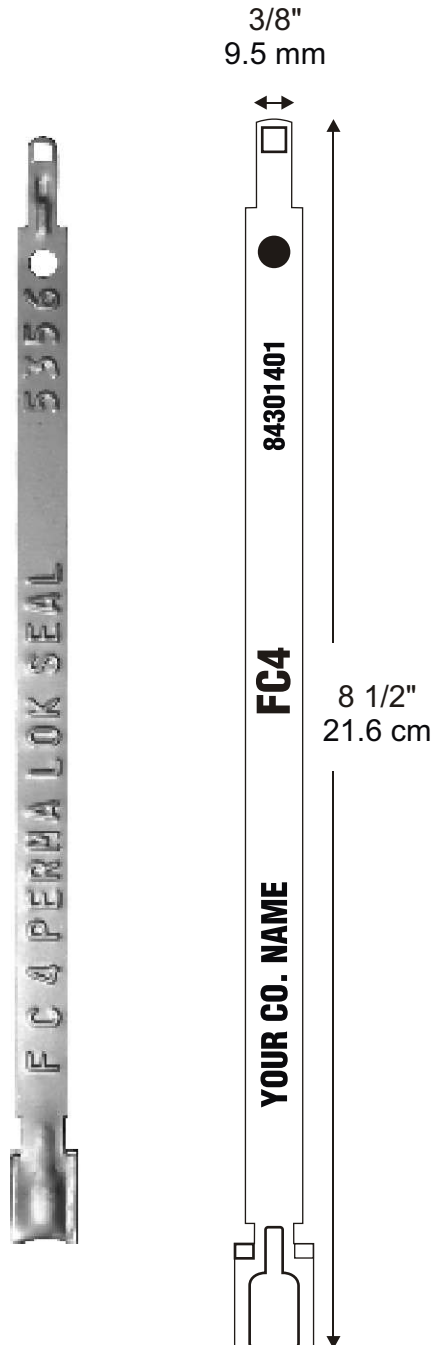


# Model: FC-4-Heavy Gauge Flat Metal Truck and Cargo Seals

Available as...

- STANDARD ITEM FROM STOCK:  
Pre-Printed / Pre-Numbered
- CUSTOM ORDERED ITEM  
Printed & Numbered



## DESCRIPTION:

AC&M's FC4 - Heavy Gauge Flat Metal Truck and Cargo Seals.  
8 1/2" x 3/8" (21.6 cm x 9.5 mm)

## BREAKING STRENGTH:

111 lbs (50.3 kg)

## SEAL COLORS:

- Tin Plated Steel

## PRINTING:

One line with 19 characters plus 7 digit consecutive numbers.

**Custom Printing is available —  
Contact AC&M for details.**

## PACKAGING:

- 100 Seals to a bundle.
- 5,000 Seals to a carton.

Cartons containing 1,000 seals measure:  
17" x 15" x 12" and weigh 12 Lbs.  
43.1cm x 38.1cm x 30.5cm and weigh 5.4 kg.

## USE:

Self locking, no tools required. Cannot be opened unless the seal is destroyed.

**Custom Colors are available —  
Contact AC&M for details.**

# AC&M

**American Casting**  
& Manufacturing Corporation

**Toll-Free (800)342-0333**

Tel: (516) 349-7010 • Fax (516) 349-8389  
email: [info@AmericanCasting.com](mailto:info@AmericanCasting.com)

51 Commercial St · Plainview, NY 11803 USA

[www.AmericanCasting.com](http://www.AmericanCasting.com)