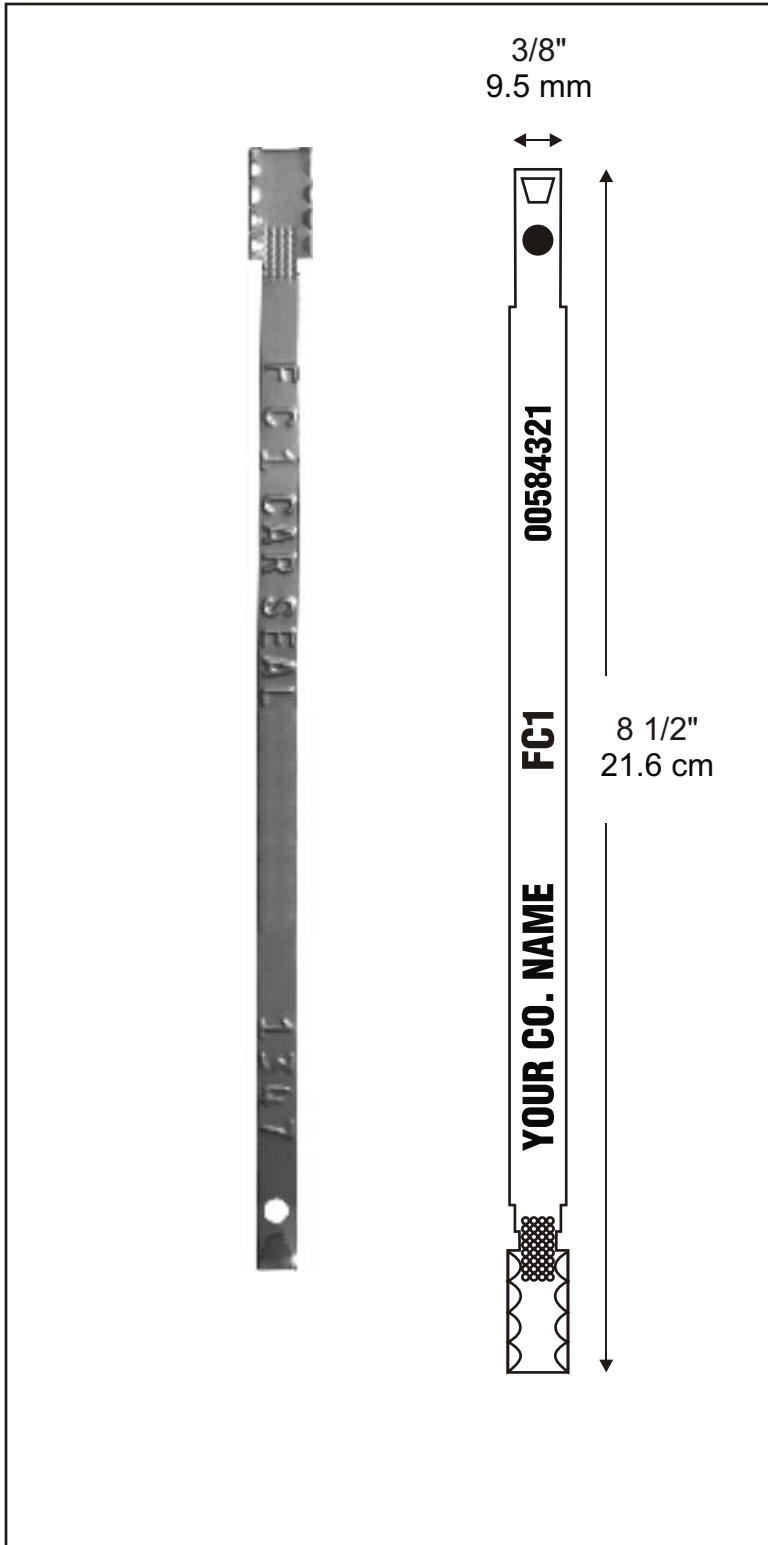


Model: FC-1-XW Flat Metal Truck and Cargo Seals

Available as...

- STANDARD ITEM FROM STOCK:
Pre-Printed / Pre-Numbered
- CUSTOM ORDERED ITEM
Printed & Numbered



DESCRIPTION:

BREAKING STRENGTH:

75 lbs (34 kg)

SEAL COLORS:

- Tin Plated Steel

PRINTING:

One line with 19 characters plus 7 digit consecutive numbers.

PACKAGING:

- 100 Seals to a bundle.
- 5,000 Seals to a carton.

Cartons containing 1,000 seals measure:
17" x 15" x 12" and weigh 12 Lbs.
43.1cm x 38.1cm x 30.5cm and weigh 5.4 kg.

USE:

Self locking, no tools required. Cannot be opened unless the seal is destroyed.

*Custom Printing is available —
Contact AC&M for details.*



American Casting
& Manufacturing Corporation

Toll-Free (800)342-0333

Tel: (516) 349-7010 • Fax (516) 349-8389
email: info@AmericanCasting.com

51 Commercial St · Plainview, NY 11803 USA

www.AmericanCasting.com