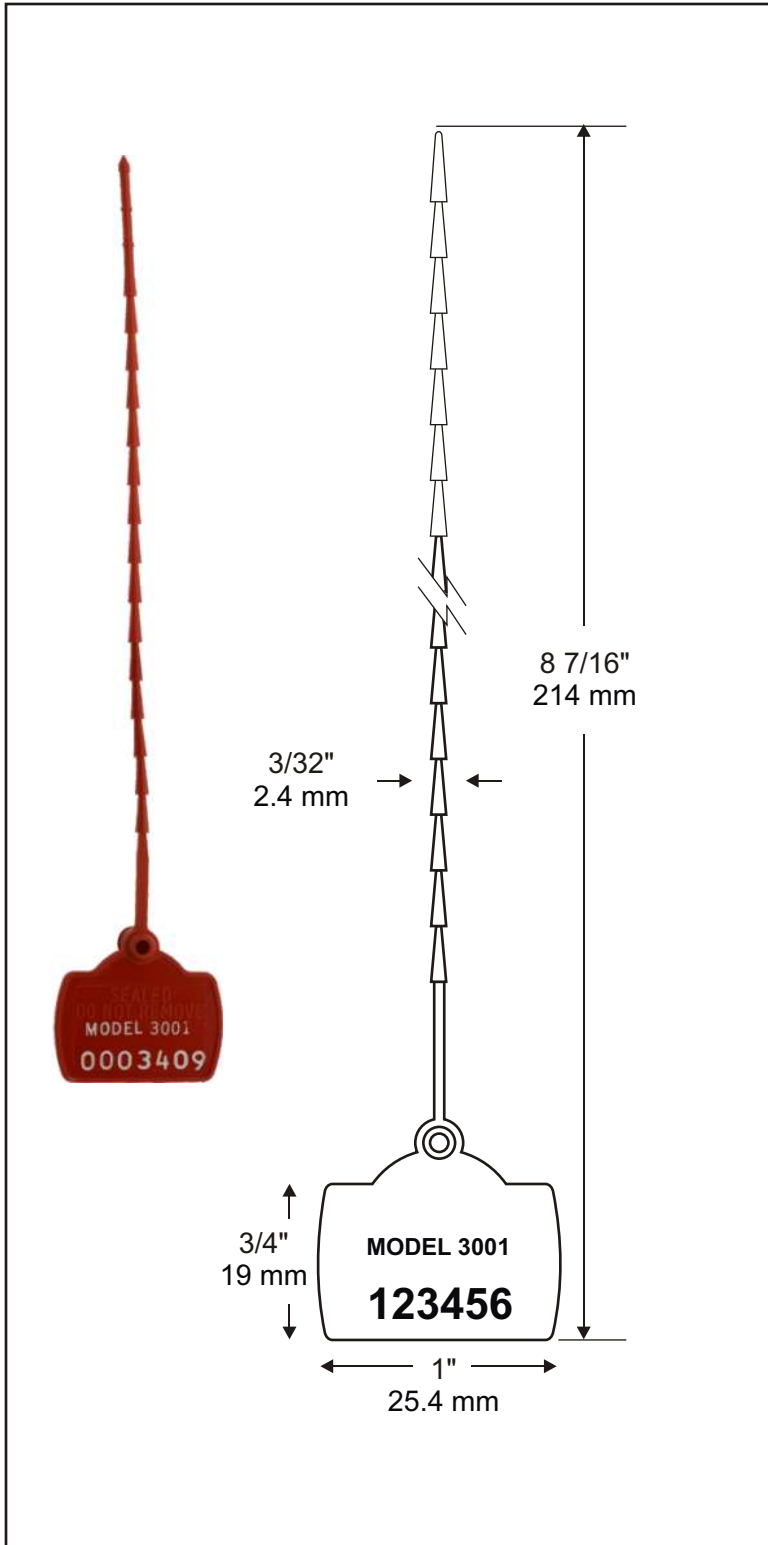


# Model: 3001 Plastic Pull-Up Seal

Available as...

- **STANDARD ITEM FROM STOCK:**  
Pre-Printed / Pre-Numbered
- **CUSTOM ORDERED ITEM**  
Printed & Numbered



## DESCRIPTION:

AC&M's 3001 8" light weight plastic pull-up seal adjusts to fit a variety of closure sizes. Lightweight and rugged high-density polypropylene co-polymer, these seals are the number one choice for economy and durability.

## BREAKING STRENGTH:

14 Lbs. / 6.3 Kg.

## PRINTING:

Supplied hot-stamped printed.  
Two lines of printing or  
1 line of print and 1 line consecutive numbers  
(7 digits).  
Alternative: 2 Lines of text 11 characters each.

## PACKAGING:

Case containing 10,000 seals:  
36" x 14" x 9" Weight 30 Lbs.  
91.4cm x 35.6cm x 22.8cm Weight 14 kg.

Standard: 1,000 per carton. 10 Cartons per case.  
Weight: 3 lbs (1.4 kg) per 1,000

## USE:

Thread strap through closure and into locking chamber. Pull seal up as far as possible. Cannot be opened unless the seal is broken.

*Custom Printing is available —*  
Contact AC&M for details.

# AC&M

**American Casting**  
& Manufacturing Corporation

**Toll-Free (800)342-0333**

Tel: (516) 349-7010 • Fax (516) 349-8389  
email: [info@AmericanCasting.com](mailto:info@AmericanCasting.com)

51 Commercial St · Plainview, NY 11803 USA

[www.AmericanCasting.com](http://www.AmericanCasting.com)